

VectorWorks 2008 SP2 Documentation Update

The SP2 (Service Pack 2) update for VectorWorks 2008 includes several enhancements, in addition to bug fixes. This document describes the new features of SP2.

Contents

Web-based Check for Updates.....	2
Rectangle, Rounded Rectangle, and Oval Tool Improvements.....	2
Exit Viewport Context Menu.....	3
Finder Quick Look (Mac OS X 10.5+ Only).....	3
Relocated Image Fills.....	5
Relocated Textures.....	5
Design Layer Viewport Class Visibility.....	6
Changing Reference Type During the Conversion of Older Files.....	7
Stack Layers and Stack Layer Options.....	7
Munsell Color Palette.....	7
Shapefile Export Criteria.....	8
Plant Library File.....	9

Web-based Check for Updates

Product: VectorWorks Fundamentals

VectorWorks 2008 software updates are now available by clicking **Check For Updates** from **Help > About VectorWorks**. A web browser opens to display available updates.

Rectangle, Rounded Rectangle, and Oval Tool Improvements

Product: VectorWorks Fundamentals

With the new rotation capabilities available in VectorWorks 2008, it can sometimes become difficult to determine which side of a rectangle, rounded rectangle, or oval is the width side.

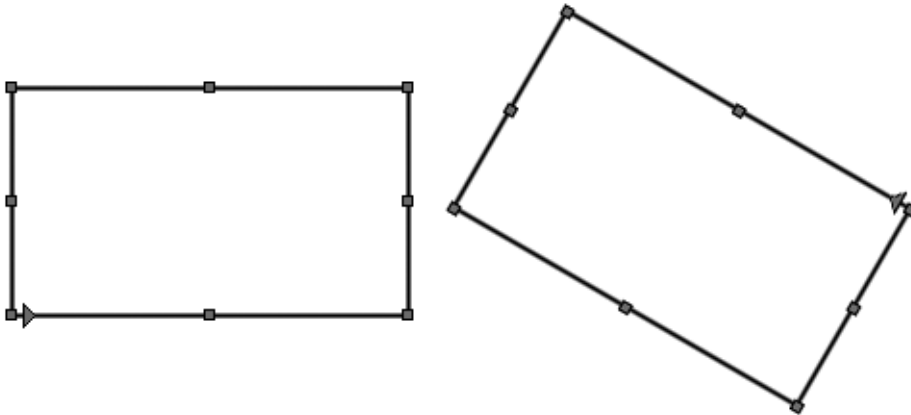
Rectangles, rounded rectangles, and ovals can now optionally display an arrow to indicate the width direction, regardless of the rotation angle. Additionally, for rectangles, rounded rectangles, and ovals, you can click the nine-point object position locator in the Object Info palette to briefly highlight the corresponding handle in the drawing. Create a rectangle, rounded rectangle, or oval as described in “Creating Rectangles” on page 210, “Creating Rounded Rectangles” on page 210, and “Creating Ovals” on page 220 in the VectorWorks Fundamentals User’s Guide.

Displaying the Width Arrow

Product: VectorWorks Fundamentals

The **Display Width Arrow** setting on the Object Info palette Shape tab is enabled by default, and the setting is not saved across VectorWorks sessions. The **Eight reshape handles** VectorWorks preference must be enabled for the width arrow to display.

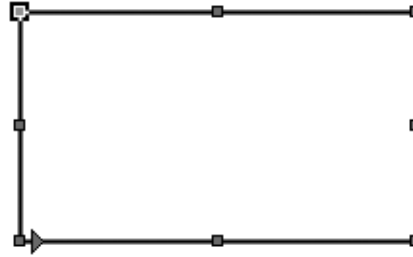
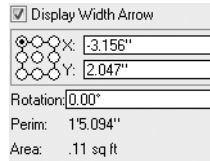
Select a rectangle or oval object. When the **Display Width Arrow** setting is enabled, an arrow displays to indicate the width direction, regardless of rotation angle.



Highlighting Object Selection Handles Using the Object Position Locator

Product: VectorWorks Fundamentals

The nine-point object position locator, which is located below the **Display Width Arrow** setting in the Object Info palette, briefly highlights the corresponding handle in the drawing area for rectangles, rounded rectangles, and ovals. For example, click on the upper-left position in the object position locator to briefly highlight the upper-left handle of the object.



Exit Viewport Context Menu

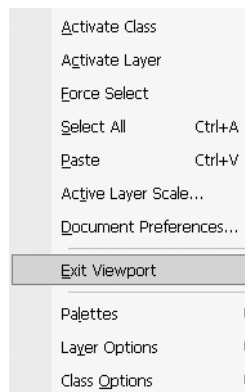
Product: VectorWorks Fundamentals

When editing a design layer from a sheet layer viewport, users can now exit directly to the design layer, rather than return to the viewport. The new context menu item is only available when **Navigate Back to Viewport** was originally selected from the Edit Viewport dialog box.

See “Cropping Sheet Layer Viewports” on page 618 in the VectorWorks Fundamentals User’s Guide for information about editing sheet layer viewports.

Users can exit the design layer editing mode in one of two ways:

- Right-click while in the design layer editing mode, and then select the **Exit Viewport** context menu item
- Press Shift + Esc while in the design layer editing mode



Finder Quick Look (Mac OS X 10.5+ Only)

Product: VectorWorks Fundamentals

VectorWorks’ Quick Look plugin provides an image preview of the file and a thumbnail icon preview to more easily locate files.

VectorWorks File Preview

Product: VectorWorks Fundamentals

When you save a file, an image of your current view of the file is also saved in the file. This image is then supplied to the operating system with VectorWorks’ new Quick Look plugin.

A preview is not available for files saved with auto-save or batch convert.

Users can view the preview image in a number of ways:

- Select one or more documents within the Finder, and then press the Space Bar
- Select a document and then press the Quick Look button within the Finder
- Select a document in the column view; the preview column contains the preview image
- Display the preview image in the preview section for **Get Info**.

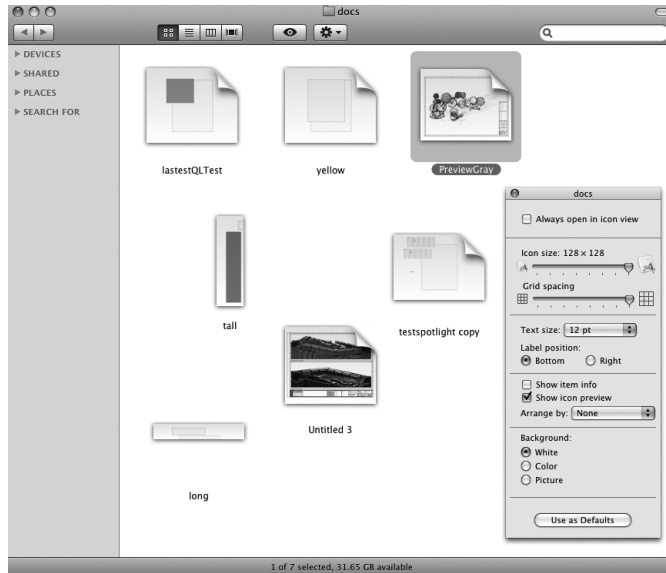


VectorWorks File Thumbnail

Product: VectorWorks Fundamentals

You can control whether thumbnail icons for VectorWorks documents use the document thumbnail icon or the standard VectorWorks icon. The default setting for **Show icon preview** is off (the standard VectorWorks icon displays), and can be changed by the **View > Show View Options** (or the Cmd + J keyboard shortcut) from the Finder menu.

When **Show icon preview** is enabled, the default behavior applies only to the current folder, and to the current folder view (with or without details, for example). Click **all folders** in Finder Preferences to see the thumbnails for all folders. Change the setting for each individual View (list view or column view, for example) to see Quick Look thumbnails in all folder views.



Relocated Image Fills

Product: VectorWorks Fundamentals

The following image fills are now installed with VectorWorks Fundamentals, rather than Architect and Designer:

- Image Fills_Forbo Flooring-Artoleum.vwx
- Image Fills_Forbo Flooring-Marmoleum.vwx
- Image Fills_Wood-Arcitex.vwx

They are located in [VectorWorks]/Libraries/Image Fills.

Relocated Textures

Product: RenderWorks

The following textures are now installed with RenderWorks, rather than Architect and Designer:

- Textures_Forbo Flooring-Artoleum.vwx
- Textures_Forbo Flooring-Marmoleum.vwx

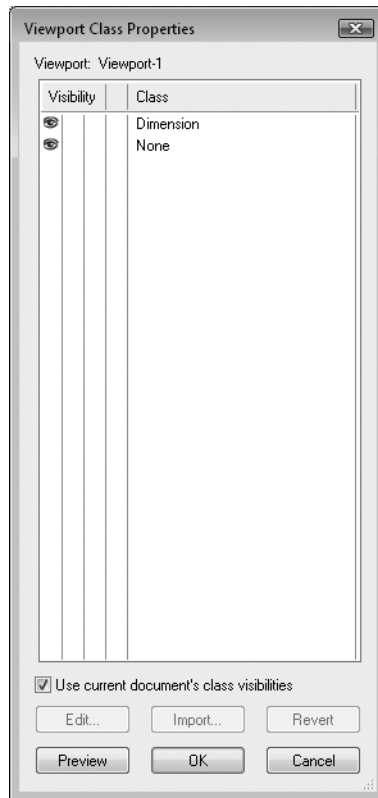
They are located in [VectorWorks]/Libraries/Textures.

Design Layer Viewport Class Visibility

Product: Architect, Landmark, Spotlight, and Machine Design

The Viewport Class Properties dialog box for design layer viewports contains a new feature, **Use current document's class visibilities**. This feature allows you to use saved views to control class visibilities in design layer viewports. When enabled, the viewport will use the current document's class visibilities. The feature is automatically enabled when layer links or referenced layers are converted into viewports.

Use current document's class visibilities is disabled by default for newly-created design layer viewports. The enabled/disabled status is saved across multiple VectorWorks sessions and can be changed before or after creating a new design layer viewport.



Changing Reference Type During the Conversion of Older Files

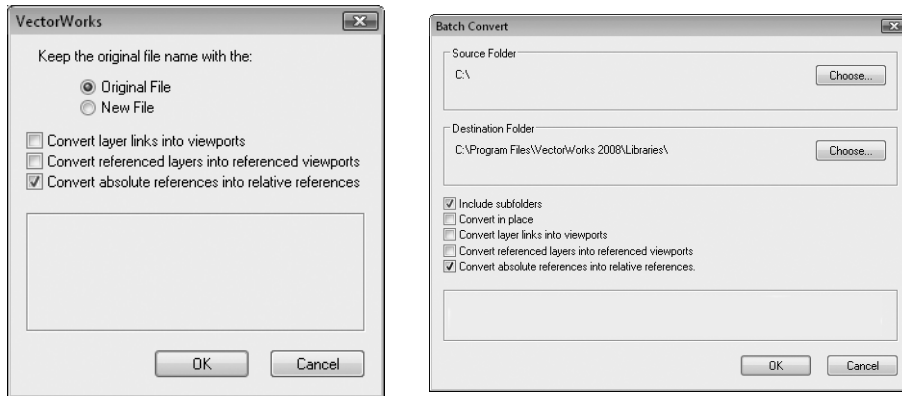
Product: Architect, Landmark, Spotlight, and Machine Design

When an older version file is converted to the current version, you can convert all workgroup references in each file from having absolute file paths to having relative file paths.

Absolute references can be changed to relative references during the following tasks:

- Opening a single older version file
- Batch conversion of multiple older files with the Batch Convert command

A new checkbox entitled **Convert absolute references into relative references** is available from the file conversion settings or the Batch Convert dialog boxes. This feature enables you to specify that any workgroup references in the file that have absolute file paths will be converted to relative file paths, if a relative file path is allowed. A relative file path is not allowed if the file is on a different volume from the referenced file. See “Converting Previous Version Files as a Batch” on page 8 in the VectorWorks Fundamentals User’s Guide for more information about batch conversion.



Stack Layers and Stack Layer Options

Product: Architect, Landmark, Spotlight, and Machine Design

The **Stack Layers** and **Stack Layer Options** commands are now available in all Design Series product workspaces (Architect, Landmark, Spotlight, and Machine Design).

Munsell Color Palette

Product: Architect, Landmark, Spotlight, and Machine Design

Munsell Colors is available as a default color palette for VectorWorks Design Series, rather than the Japanese Industrial Standard (JIS) color palette. It is available in [VectorWorks]/Libraries/Defaults/Color Palettes.

Shapefile Export Criteria

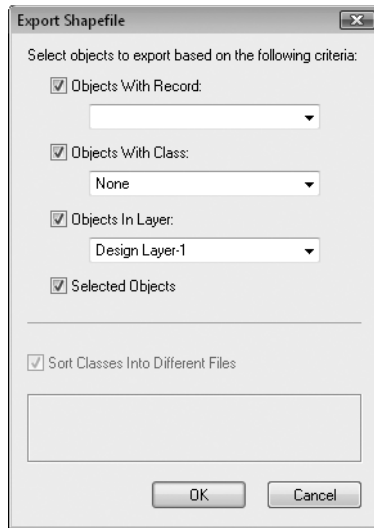
Product: Landmark

New shapefile export options enable you to export drawing components using multiple criteria, rather than just record data as the export criteria. You can now also export currently selected objects, objects with a specified class, and/or objects on a specified layer. For an object to be exported, it must satisfy all selected criteria.

For example, if you select both **Objects With Class** and **Objects With Layer** export options, only objects that belong to both the selected class and layer will be exported.

To export a shapefile:

1. Select **File > Export > Export Shapefile**. The Export Shapefile dialog box opens.



Parameter	Description
Objects With Record	Select this option to export all objects that share a specific data record. If you specify a record format, the record data is included in the shape file database file. If a record format is not specified, class and layer data for the exported object is included in the shapefile database file.
Objects With Class	Select this option to export objects in a specified class
Objects In Layer	Select this option to export objects in a specified layer
Selected Objects	Select this option to export objects that are currently selected
Sort Classes Into Different Files	Select this option to create individual shapefiles for each class. This option appears dimmed if Objects With Class is selected.

2. See “Exporting in Shapefile Format” on page 518 in the VectorWorks Design Series User’s Guide for additional information about shapefile export.

The default shapefile file name will be the record format name, the class name, the layer name, or the VectorWorks file name, respectively. The shapefile name can be modified at the time of export.

Plant Library File

Product: Landmark

The library file, Plant Objects.vwx, contains additional black/white and color symbols to provide greater flexibility in planting designs.

You can make the Plant Objects library a Resource Browser favorite by selecting **Add New Favorite Files** from the Resource Browser **Files** menu, and then navigating to the [VectorWorks]\Libraries\Plants\Plant Objects directory. See "Resources in Favorites" on page 148 in the VectorWorks Fundamentals User's Guide for more information about adding resources as favorites.

