

# VectorWorks ARCHITECT

All the tools and technology you need in one cost-effective architectural design program

VectorWorks Architect is the single-most comprehensive solution for firms that don't have unlimited IT budgets. With a simple, intuitive interface, it's easier to learn and use than most other architectural software, yet it can help you create and document your most complex designs. And VectorWorks Architect has the capabilities to complete every phase of a project's life cycle—from design through construction.

## Easy to learn and use

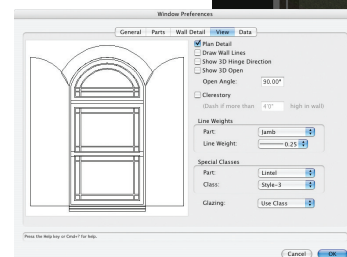
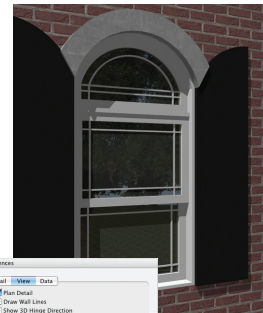
With VectorWorks Architect, you can do what you like to do best—design. With a simple, customizable interface that's menu and icon driven, it's easier to learn and use than standard CAD programs. VectorWorks Smart Cursor™ technology replaces manual drafting tools, making it easy to find snap points, offsets, and tangents, as well as draw precisely and quickly. And, since VectorWorks Architect is tailored to the architectural design and production process, it works the way you think. In addition to offering standard CAD tools, VectorWorks Architect allows you to design with real-world building components. You can quickly sketch ideas with VectorWorks Architect's 2D drawing tools, then rework, refine, and document your designs with doors, walls, and windows. The building objects are easy to edit and automatically display in both 2D and 3D views. So, creating 3D models of your 2D drawings is automatic.

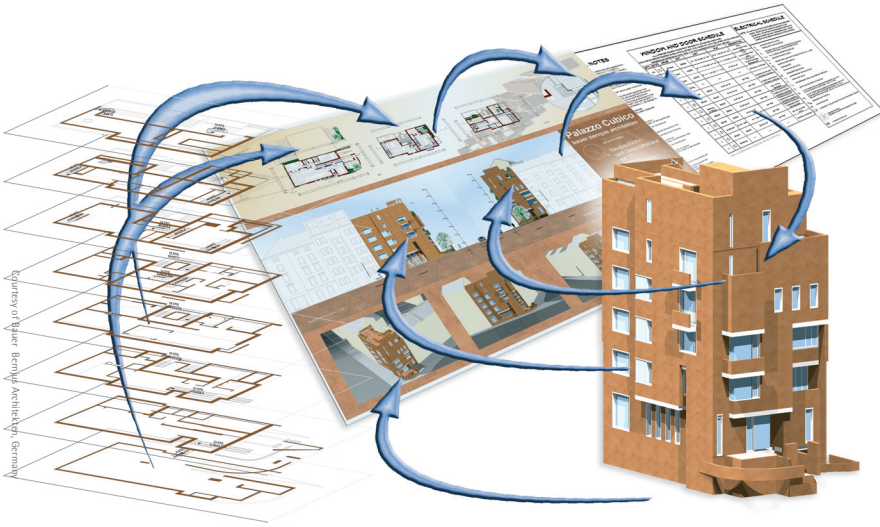
## A complete solution

Unlike other programs, VectorWorks Architect offers a comprehensive range of 2D, 3D, and production management capabilities that benefit all phases of the design process, including pre-design, site analysis, schematic design, design development, presentation, visualization, construction documentation, and material take-offs. Plus, VectorWorks Architect goes beyond designing buildings. You can design just about anything using VectorWorks Architect—without having to use any additional programs—from interior space and retail fixtures to custom cabinetry and furniture.



Courtesy of Robert Curdson, Brazil





Agency of Blauer Romberg Architekten, Germany

### Increased productivity with Building Information Modeling (BIM)

For more than 15 years, VectorWorks Architect has provided Building Information Modeling (BIM) capabilities that offer a true increase in productivity. With BIM, your 2D drawings, 3D drawings, and project data are linked into a simple, yet powerful design environment.

VectorWorks' BIM technology allows you to design in 2D and 3D simultaneously. Changes made in one view are automatically updated in the other. And, because your drawings are linked, a change in one can automatically ripple through the entire drawing set, saving you time and reducing drawing errors. Plus, you can integrate information into your design to automatically generate schedules, as well as track materials and costs. You can export this information to use downstream in other costing, analysis, and database programs.

### Flexible to fit your workflow

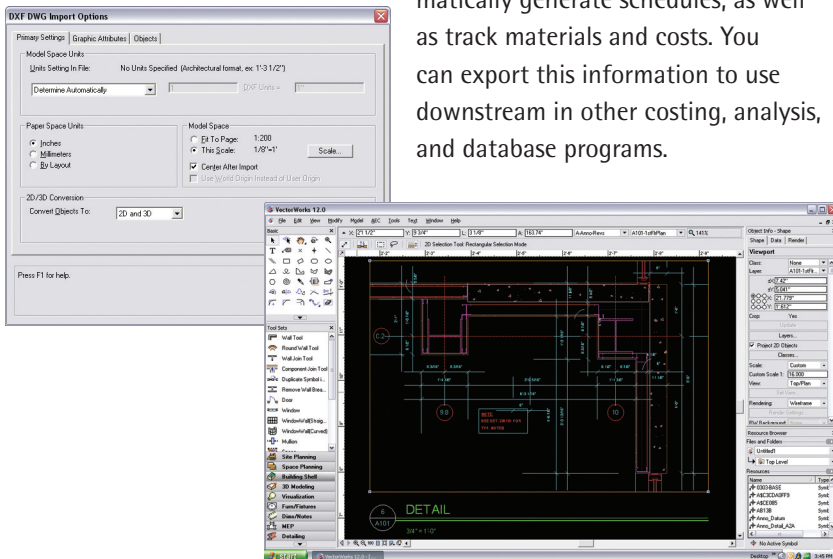
Unlike other BIM programs, VectorWorks Architect does not limit you to a certain workflow. You can work in 2D only, or merge 2D and 3D. And, you're not limited to the building objects VectorWorks Architect provides. All objects can be modified to meet your requirements, or you can create your own custom objects.

For larger firms, VectorWorks Architect offers management tools to help develop, organize, and manage CAD standards. VectorWorks Architect's workgroup referencing features allow teams of designers to collaborate on the same project.

VectorWorks Architect is also completely customizable. You can easily rearrange tools, commands, and keyboard shortcuts to suit your needs. A built-in scripting environment allows you to automate routine drafting tasks or create full-blown commercial applications.

### Easy file sharing

With superior DXF/DWG translation, VectorWorks Architect allows you to work with whatever and whomever you need to get the job done. We're founding members of the Open Design Alliance™, and we have a full team of engineers dedicated to ensuring DXF/DWG compatibility. We also support a number of graphic file formats, such as GIF, JPG, BMP, TIF, and EPS, allowing you to easily import images into your designs and export your drawings to graphics programs. Support for IGS, SAT, and STL allows you to send VectorWorks models to 3D printers and rapid prototyping machines. You can even import 3ds files into VectorWorks.





### Convenient cost and materials tracking

VectorWorks Architect provides automatic data tracking capabilities, so you'll never have to count items in your drawing again. Schedules, reports, and materials lists are automatically generated and updated from the information in your design—saving you countless hours and reducing errors.

Unlike other CAD programs, VectorWorks Architect provides a framing model at no additional charge. This time-saving tool allows you to generate 2D framing plans and elevations, 3D framing models, and framing take-offs for floors, walls, and roofs quickly and easily.

### Stunning 2D presentation capabilities

VectorWorks Architect provides advanced graphics capabilities not normally found in CAD programs, so your 2D drawings come to life. With VectorWorks Architect, you can easily control line weights, as well as add colors, patterns, hatches, and even gradient fills to your designs. Exclusive sketch rendering technology allows you to turn hard-lined drawings into soft, hand-sketched illustrations. You can even easily import digital images or graphics created in Photoshop® to use as backgrounds or to illustrate design ideas. For more advanced 3D rendering capabilities, plug in RenderWorks.

### Dedicated support

VectorWorks Architect has a dedicated support system, so you have access to help in a variety of forms whenever you need it:

- A comprehensive printed manual and interactive online help
- 24-hour message boards
- Independent local user groups
- Free technical support
- LISTSERV® lists

Several training options are also available to you:

- Self-paced tutorials
- Training CDs
- Guided online training
- Custom onsite training
- Formal classroom training

### Affordable

It's easy to see why VectorWorks is used by more than 400,000 designers and sold in more than 80 countries—no other software offers so much for so much less. VectorWorks Architect can help you save money right from the start. But affordability goes beyond the initial purchase price. With VectorWorks Architect, you also get free technical support, affordable training, free updates, and a reasonable upgrade schedule. Not to mention the gains in productivity you'll see almost immediately, since VectorWorks Architect is so easy to learn and use.

## Add RenderWorks to create spectacular presentations

RenderWorks seamlessly integrates into VectorWorks Architect to provide you with sophisticated photorealistic and hand-rendered effects. Whatever your objective—realistic or artistic—you can create stunning presentation materials to help you sell your ideas.

- Radiosity and raytraced rendering
- Solar animation
- Non-photorealistic rendering technology
- Physical lights and area lights
- Volumetric lighting
- Realistic shadows
- Vast library of more than 1,250 pre-defined textures
- Advanced texture mapping
- Background images
- Free library of image props
- Atmospheric effects
- Macintosh® and Windows® support for QuickTime® VR

### For more information

To learn more about our products in the United States, call 410-290-5114 or e-mail us at [sales@vectorworks.net](mailto:sales@vectorworks.net). For customers outside the U.S., please visit our website at [www.vectorworks.net](http://www.vectorworks.net) to locate a local distributor.

**Nemetschek North America**  
7150 Riverwood Drive  
Columbia, MD 21046  
Ph: 410-290-5114  
Fax: 410-290-8050  
[www.vectorworks.net](http://www.vectorworks.net)

©1985–2005 Nemetschek North America  
Nemetschek North America is a wholly-owned subsidiary of European software giant Nemetschek AG. A global leader in design technologies, Nemetschek N.A. has been developing CAD software for the AEC, entertainment, landscape design, and machine design fields since 1985. VectorWorks is one of the world's best selling cross-platform CAD applications. It is available in more than 80 countries and is translated into seven languages. An all-in-one solution that's easier to learn and use and more cost-effective than most other CAD programs, VectorWorks is ideal for firms that don't have unlimited IT budgets. For more information, visit [www.vectorworks.net](http://www.vectorworks.net)



## VectorWorks Architect— design, production, presentation, and construction

VectorWorks ARCHITECT offers you all this and more in one powerful, yet easy-to-use program.

- Precise production drafting
- Free-form 3D modeling and conceptual design tools
- Intelligent building objects
- Space planning and massing
- 2D/3D site design and analysis
- Advanced production tools to help create and manage drawing sets
- Costing and materials lists
- More than 60 free object libraries with thousands of symbols
- New Knoll™ furniture library
- Library of details from [www.CADdetails.com](http://www.CADdetails.com)™
- Custom stair generator
- Automatic roofing
- Wall, floor, and roof framing
- HVAC, electrical, and plumbing suite
- Live sections
- Viewports
- Detailing objects
- Workgroup referencing
- Powerful text and notation tools
- Redline and revision control
- Issue manager and batch printing
- Import/export support for DXF/DWG, digital images, and other common 3D formats, including STL
- Export files for energy analysis
- Built-in scripting
- High-quality 2D and 3D presentation capabilities